

# Connah's Quay Low Carbon Power

## Environmental Statement Volume III Figure 5-1: Key Plan - Indicative Construction Work Areas

Planning Inspectorate Reference: EN010166

Document Reference: EN010166/APP/6.3

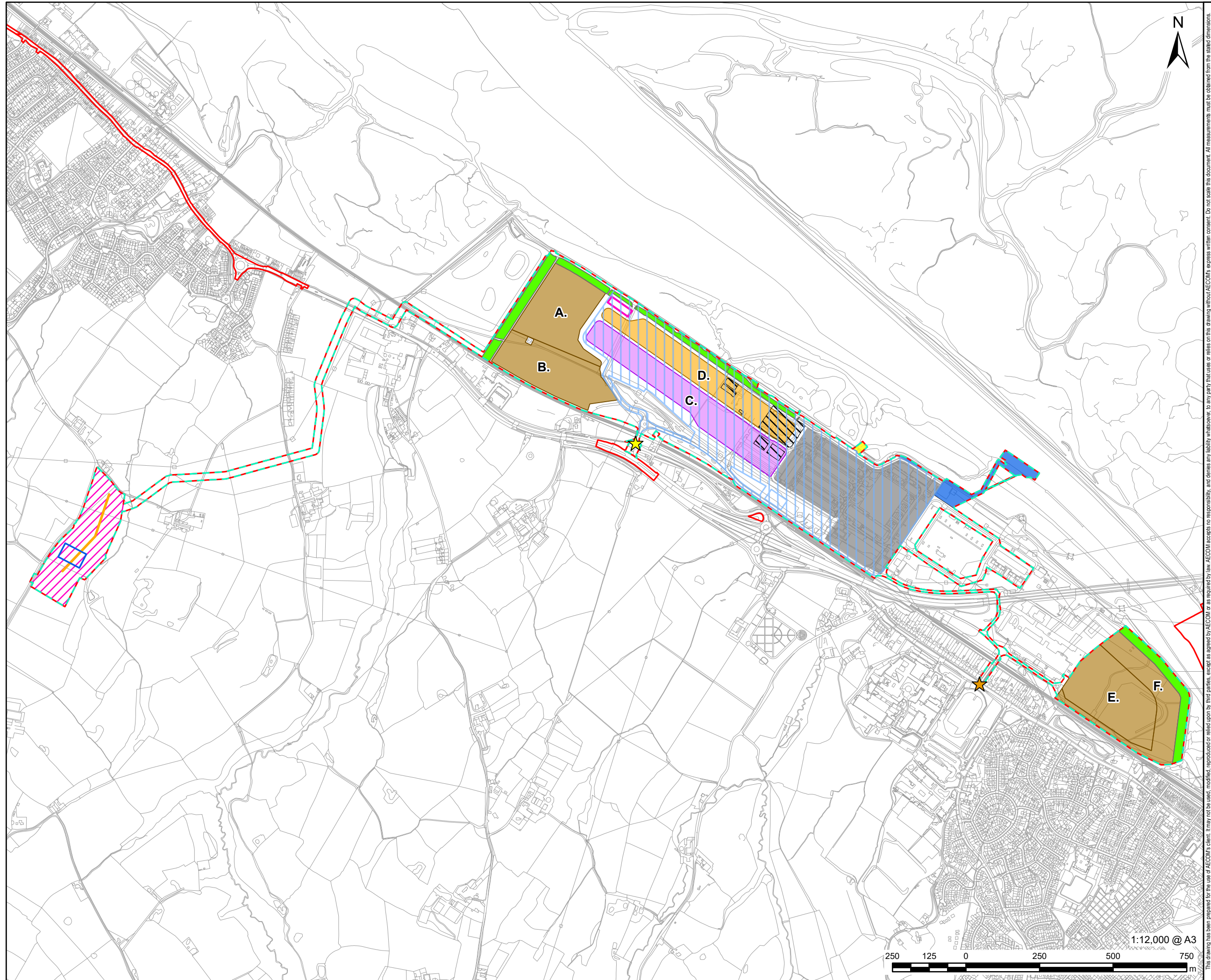
Planning Act 2008 (as amended)

Infrastructure Planning (Applications: Prescribed Forms and Procedure) Regulations 2009 - Regulation 5(2)(a)

Revision 00

**August 2025**





This drawing has been prepared for the use of AECOM's client. It may not be used, modified, reproduced or relied upon by third parties, except as agreed by AECOM, or as required by law. AECOM accepts no responsibility, and denies any liability whatsoever, to any party that uses or relies on this drawing without AECOM's express written consent. Do not scale this document. All measurements must be obtained from the stated dimensions.